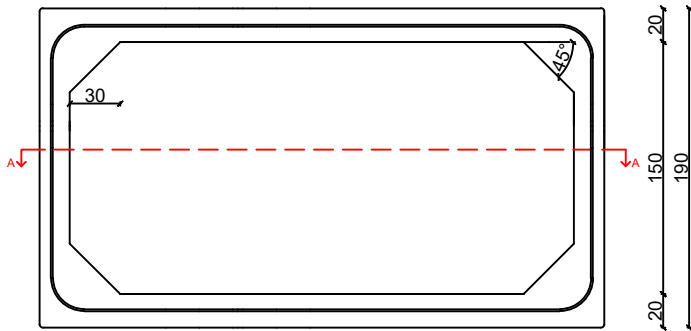
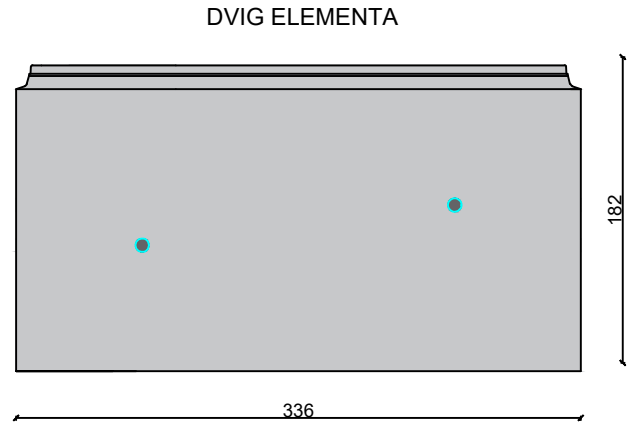
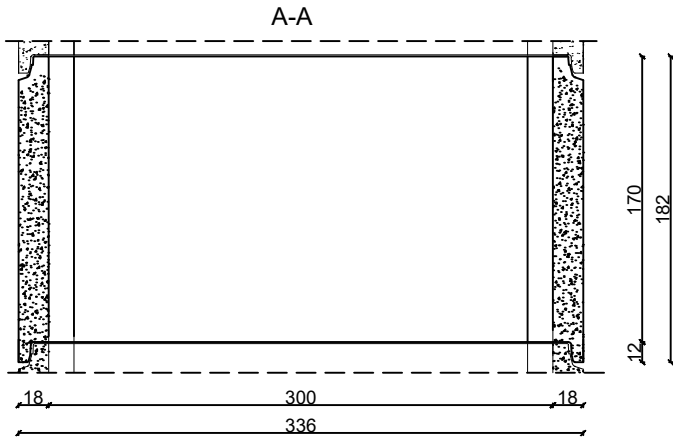
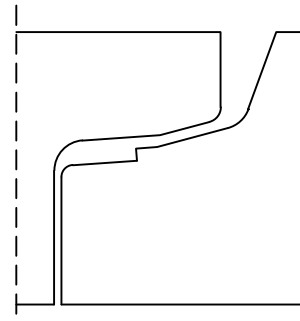





# PREPUST "INDIA" 300x150L170



DETAIL SPOJA



	UNI EN ISO 9001:2015 Nr. 50 100 9341 Rev.006	1. TEŽA ELEMENTA	7700 KG
		EN 14844:2006+A2:2011 Nr.0948 - CPR - 0077 Rev. 4	2. BETON
3. ODPORNOST			$R_{ck}=50 \text{ N/mm}^2$ ; $f_{ck}=41 \text{ N/mm}^2$
	UNI/PdR 88:2020 TUVIT-LMR-A0092	4. ARMATURA	B450A( $\varphi$ 6mm); B450C(> $\varphi$ 6mm)
		5. ODPORNOST ARM.	$f_{tk}=540 \text{ N/mm}^2$ ; $f_{yk}=450 \text{ N/mm}^2$
		6. MEHANSKA ODPORNOST	Mf zgornje plošče = 61,95 kNm/m
		7. KOEFICIENT VARNOSTI	c=1,5; s= 1,15
		8. ODPORNOST BETONA	XC4